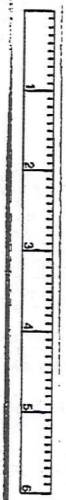


SCALE 1" = 300

TRW-REDI SCALE IN 1/10 OF AN INCH



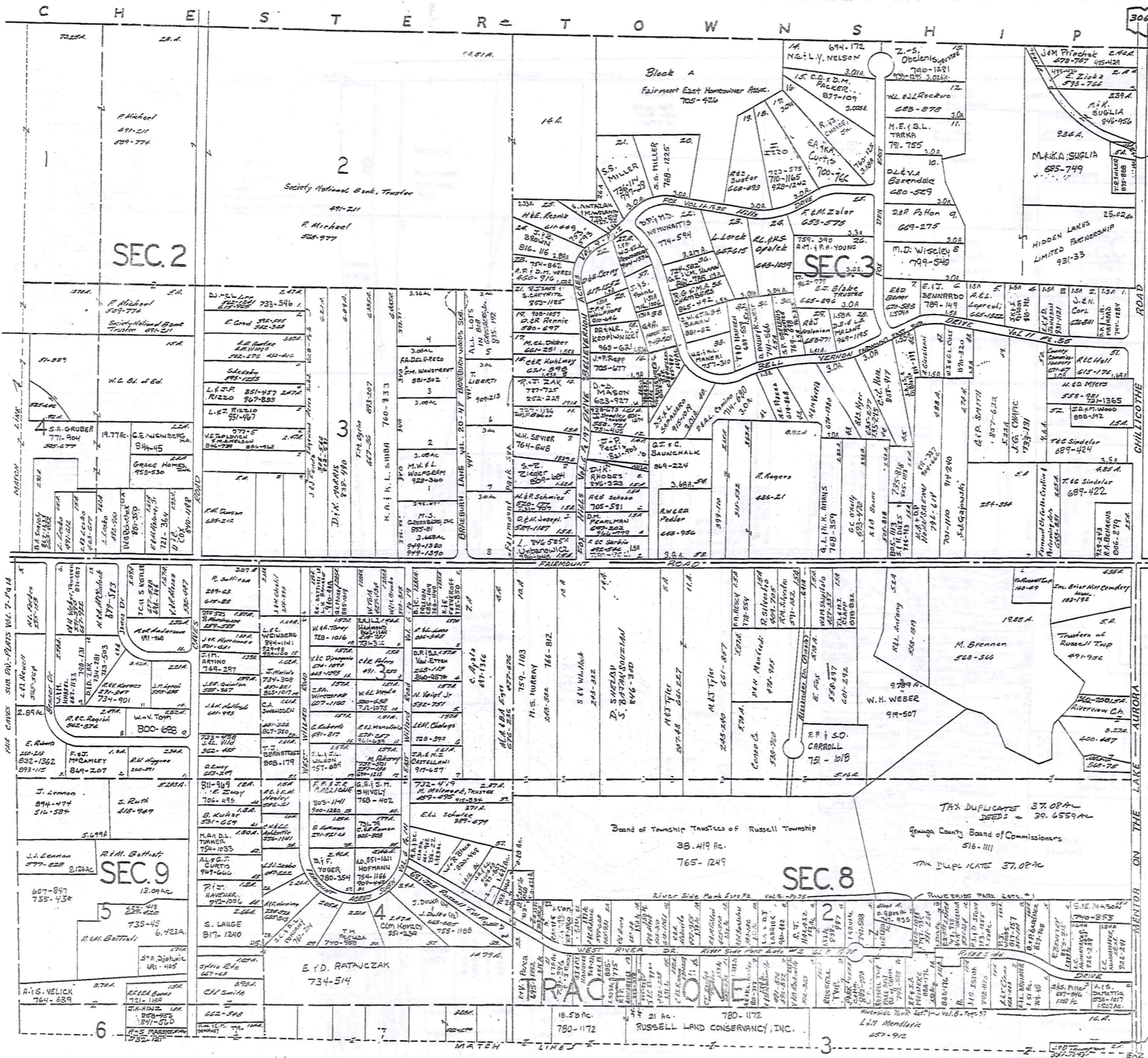
1-800-345-7334

\* Inadequate descriptor.

RELATIVE REPRESENTATION  
JANUARY 1, 1994

A	B	C	D
E	F	G	H
I	J	K	L
M	N	O	P

RUSSELL A



SCALE 1"=300'

TRW-REDI SCALE IN 1/10 OF AN INCH 1-800-345-7334

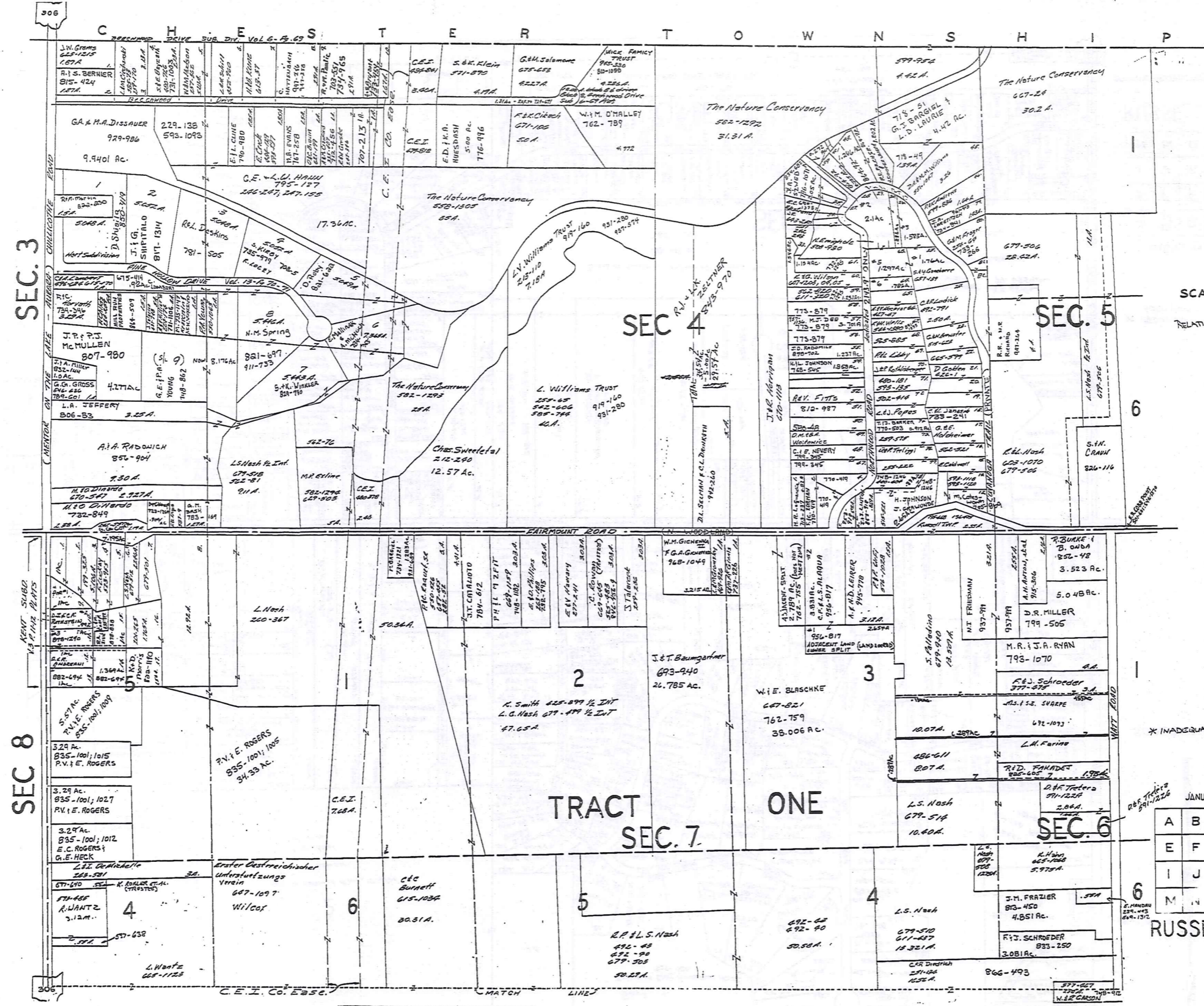
\* Inadequate description

JANUARY 1, 1994

A	B	C	D
E	F	G	H
I	J	K	L
M	N	O	P

RUSSELL-B

RELATIVE REPRESENTATION



SEC. 3

SEC. 4

SEC. 5

SEC. 8

TRACT SEC. 7

ONE

SEC. 6

RUSSELL-C



SCALE 1" = 300'  
RELATIVE REPRESENTATION

TRW-REDI  
SCALE IN 1/10 OF AN INCH



1-800-345-7334

\* INADEQUATE DESCRIPTION

JANUARY 1, 1994

A	B	C	D
E	F	G	H
I	J	K	L
M	N	O	P

306

306

CHESTER TOWNSHIP



SCALE 1" = 300'  
JAN. 1, 198

TRW-REDI  
SCALE IN 1/10 OF AN INCH

1-800-345-7334



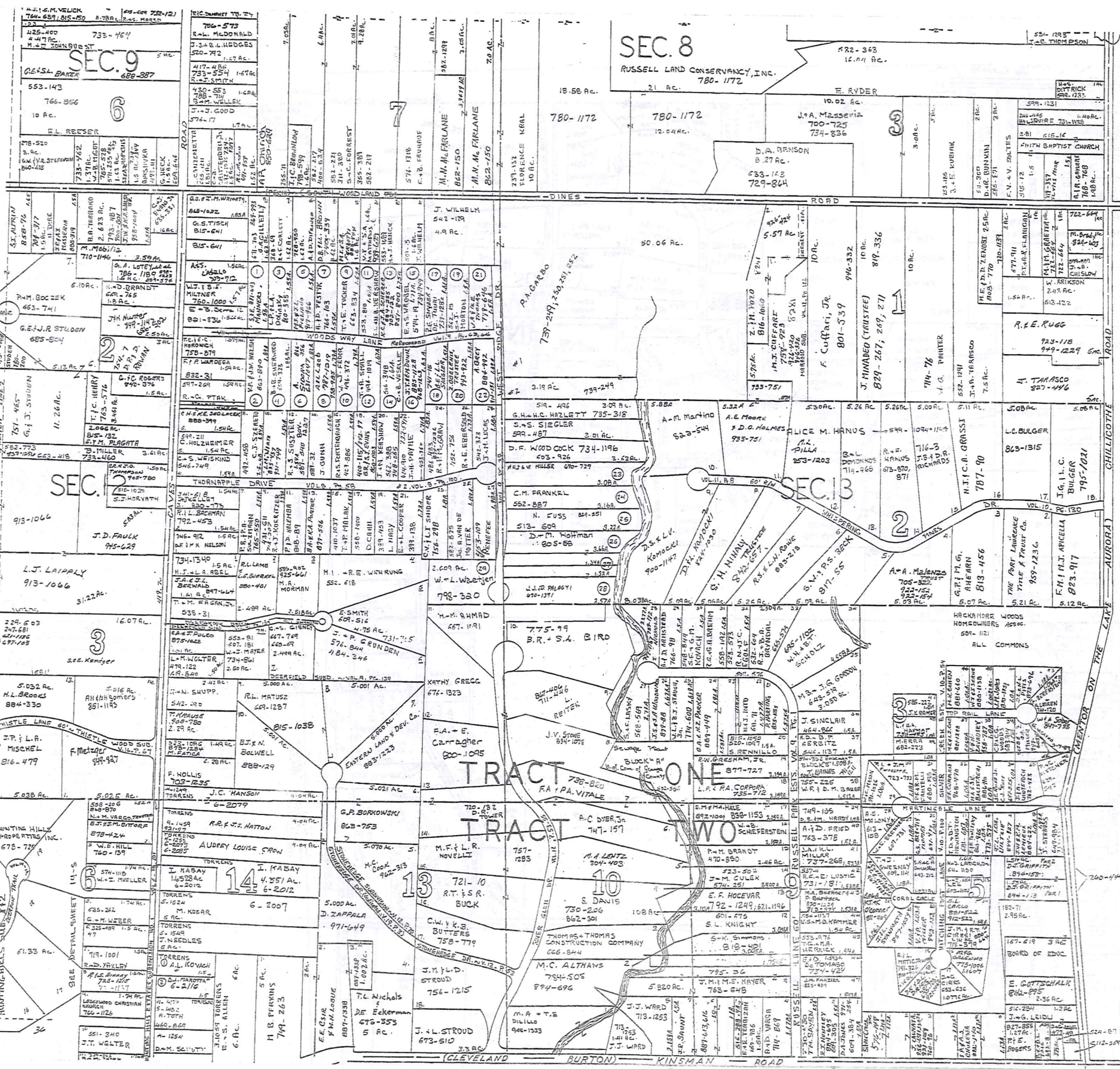
\* Inadequate description

JANUARY 1, 1994  
RELATIVE REPRESENTATION

A	B	C	
E	F	G	H
I	J	K	L
M	N	O	P

RUSSELL-D





**SEC. 8**

RUSSELL LAND CONSERVANCY, INC.  
21 AC. 780-1172

**SEC. 9**

6  
686-287

**SEC. 2**

3  
913-1066

**SEC. 3**

2  
813-456

**TRACT ONE**

**TRACT TWO**

SCALE 1"=300'

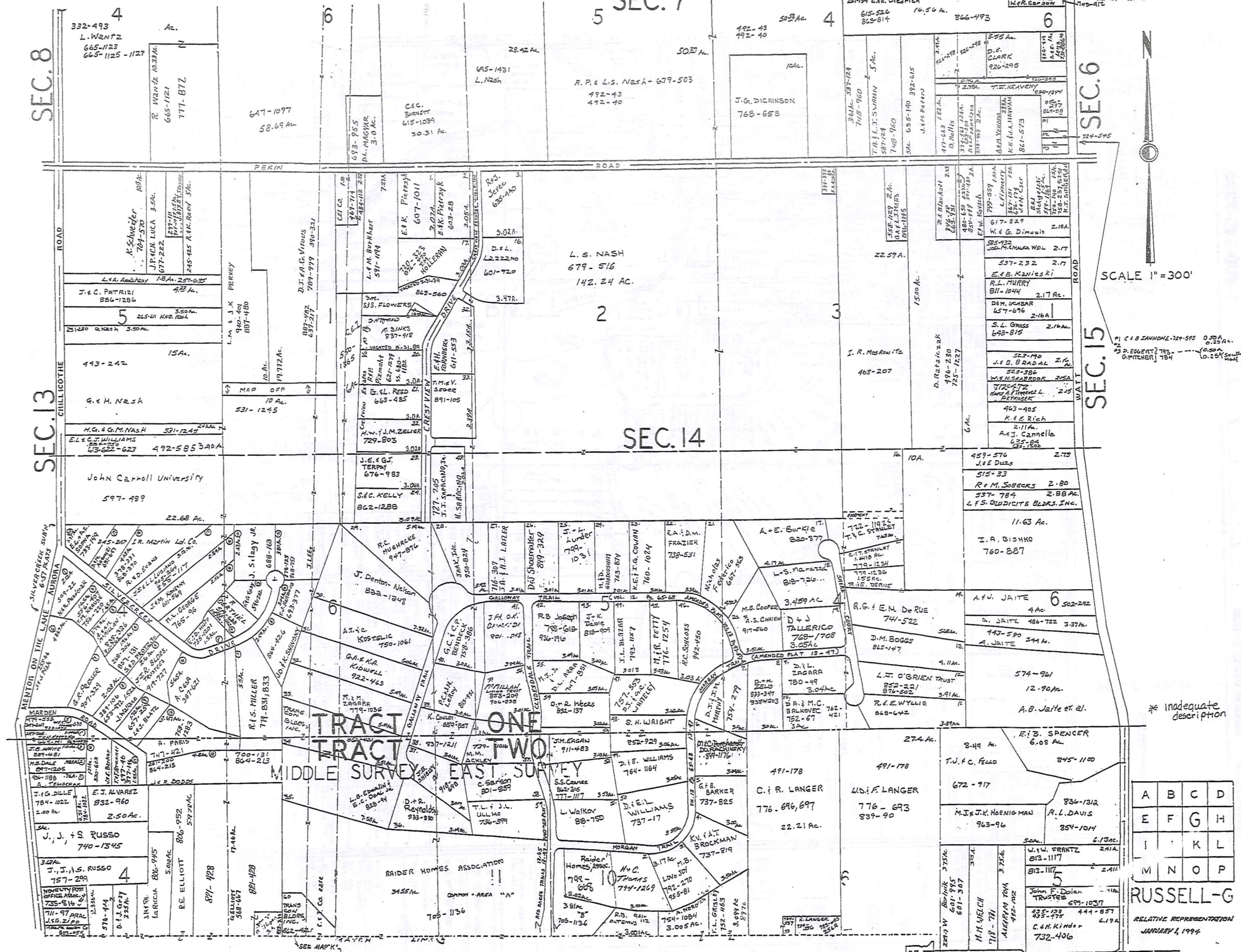
TRW-REDI  
 SCALE IN 1/10 OF AN INCH  
 1-800-345-7334

\* Inadequate description

January 1, 1974  
RELATIVE REPRESENTATION

A	B	C	D
E	F	G	H
I	J	K	L
M	N	O	P

RUSSELL - F



SEC. 6

SEC. 15

SEC. 14

SEC. 13

SEC. 8

SCALE 1" = 300'

\* Inadequate description

A	B	C	D
E	F	G	H
I	K	L	
M	N	O	P

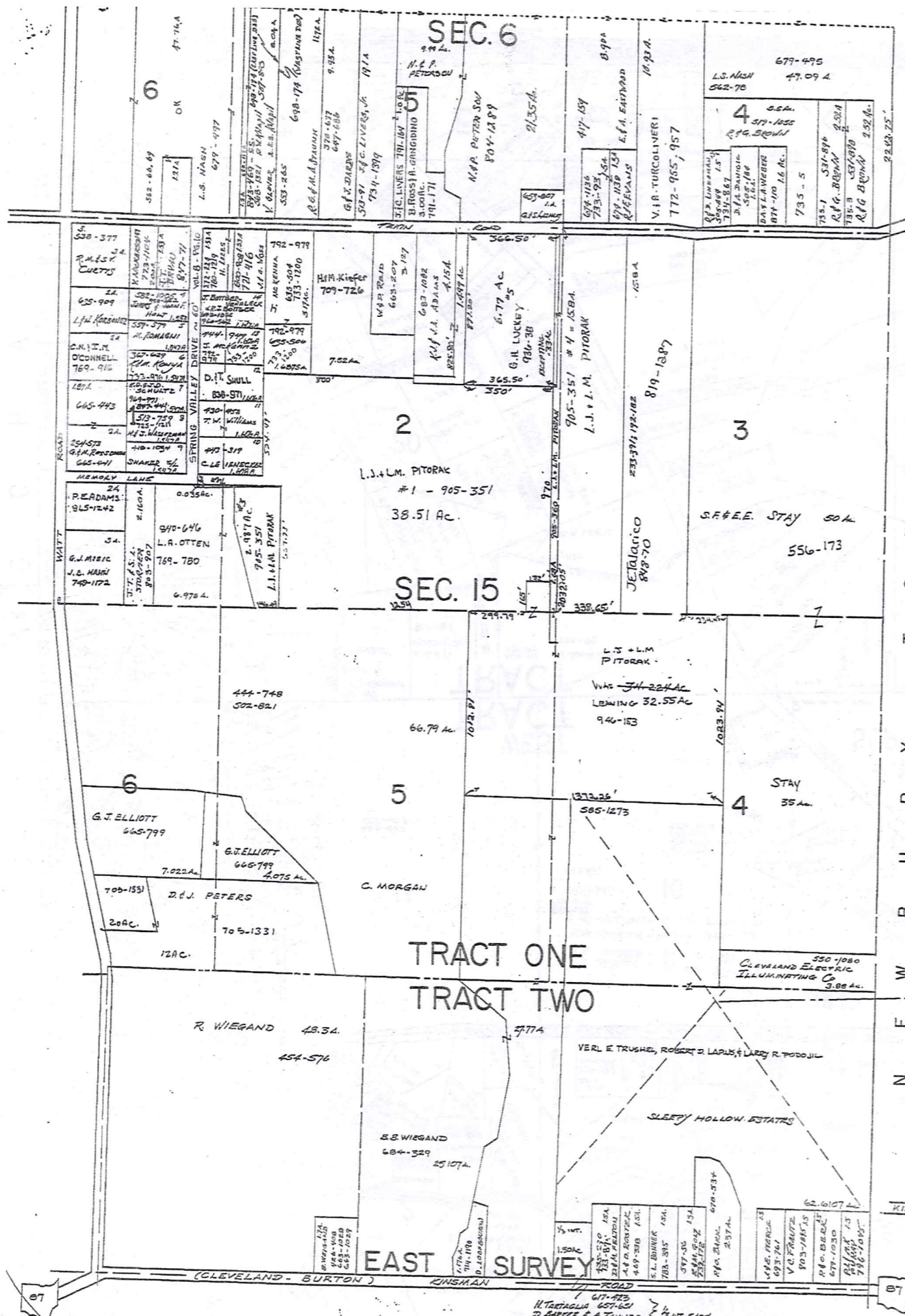
RUSSELL-G  
RELATIVE REPRESENTATION  
JANUARY 1, 1994

TRIM-REDI

SCALE IN 1/40 OF AN INCH

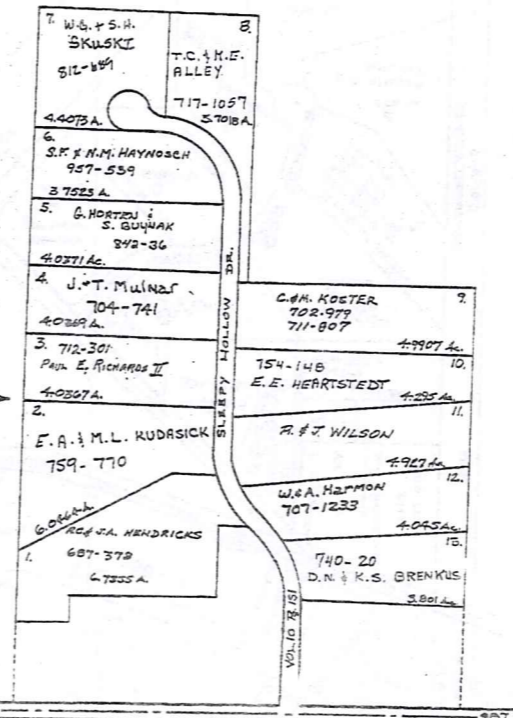
1-800-345-7334

Society for Maps



SCALE = 1" = 300'  
JAN. 1, 1987

NORTHWEST CORNER OF SECTION 16



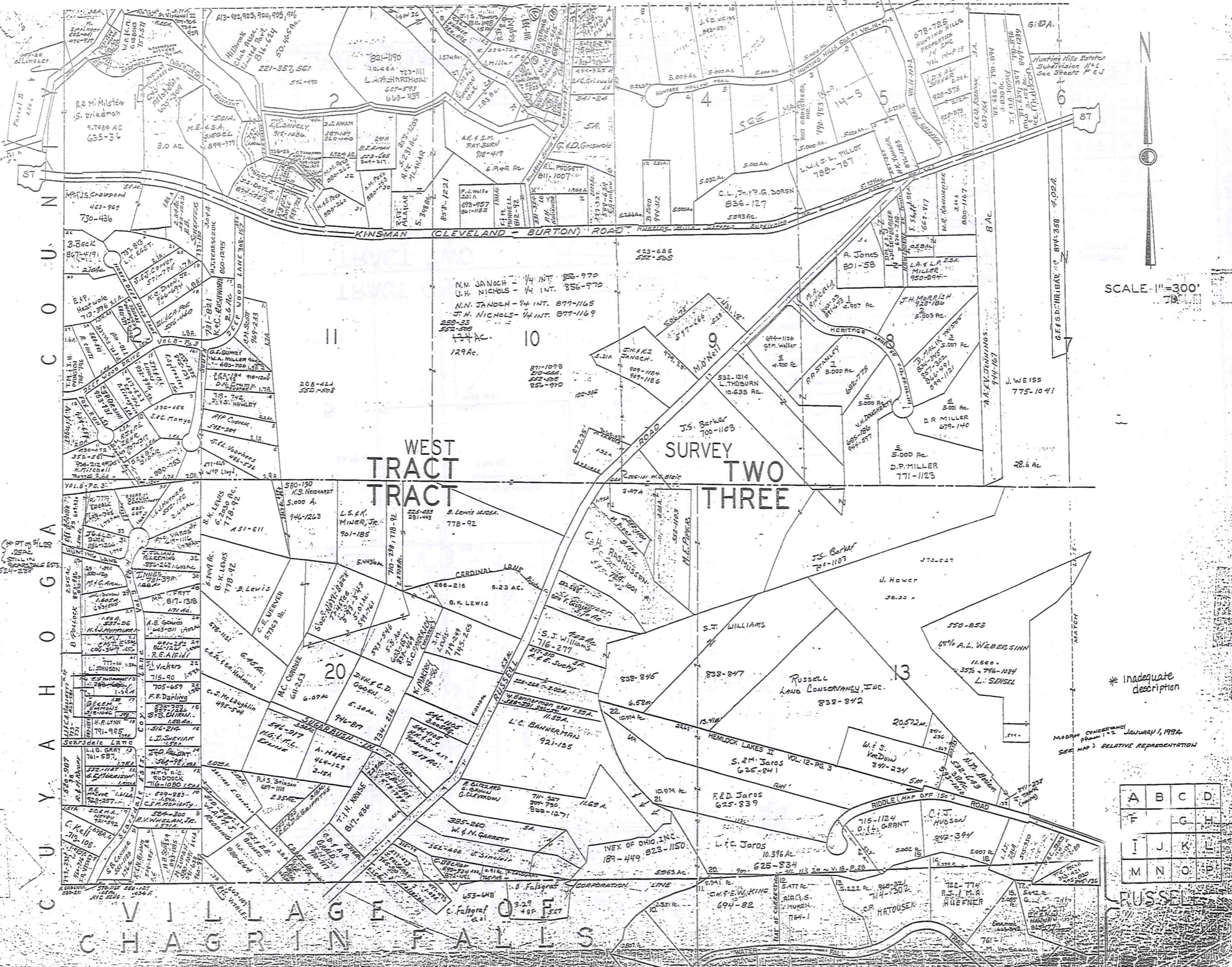
\* Inadequate description

JANUARY, 1994  
RELATIVE REPRESENTATION

A	B	C	D
E	F	G	H
I	J	K	L
M	N	O	P

RUSSELL-H

TRW:REDI SCALE IN 1/10 OF AN INCH 1-800-345-7334



TRW-REDI  
 SCALE IN 1/10 OF AN INCH  
 1-800-345-7334

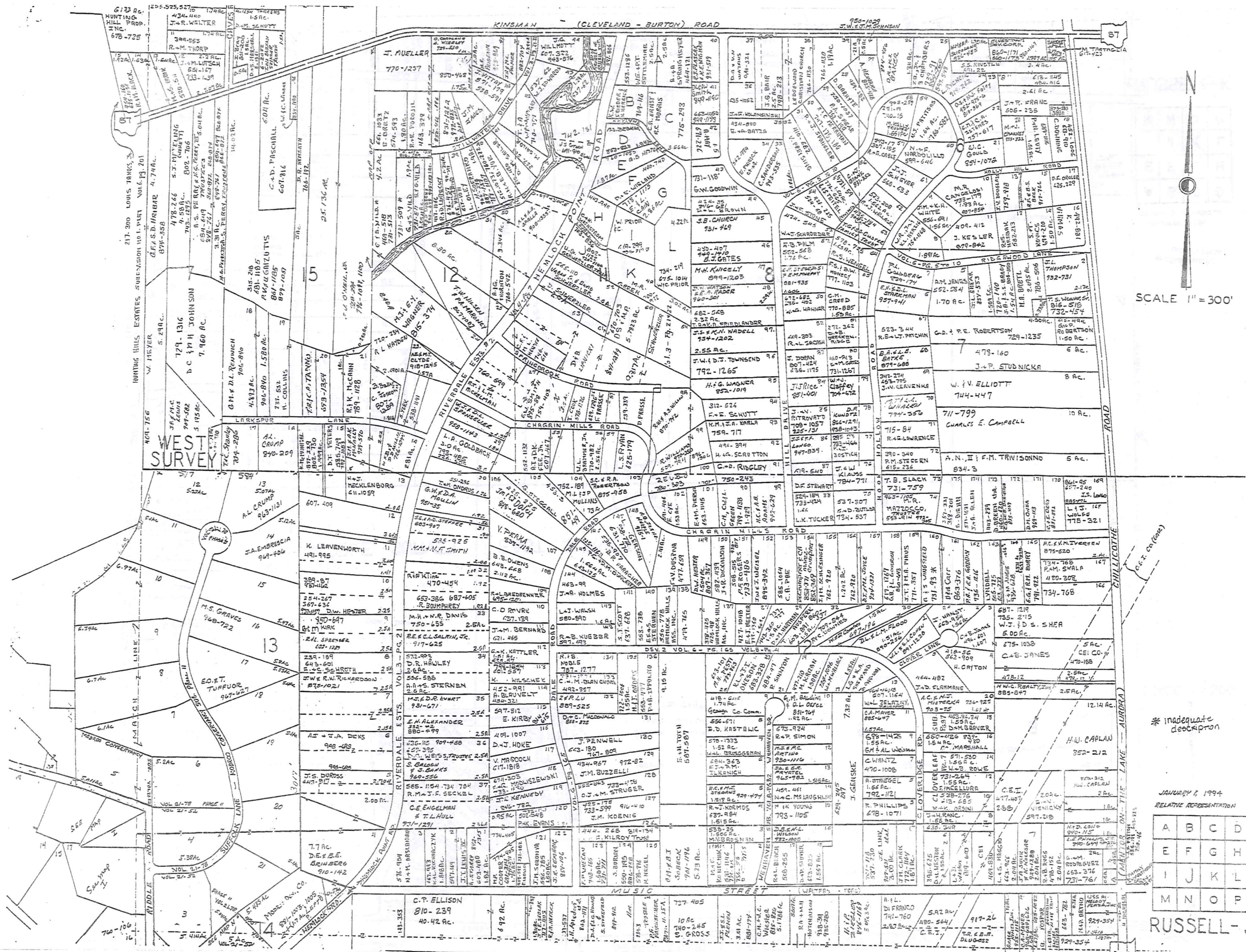
SCALE 1"=300'

\* Inadequate description

MADE AND CONFERRED JANUARY 1, 1934  
 SEE MAP 3 RELATIVE REPRESENTATION

A	B	C	D
E	F	G	H
I	J	K	L
M	N	O	P

RUSSELL



SCALE 1" = 300'

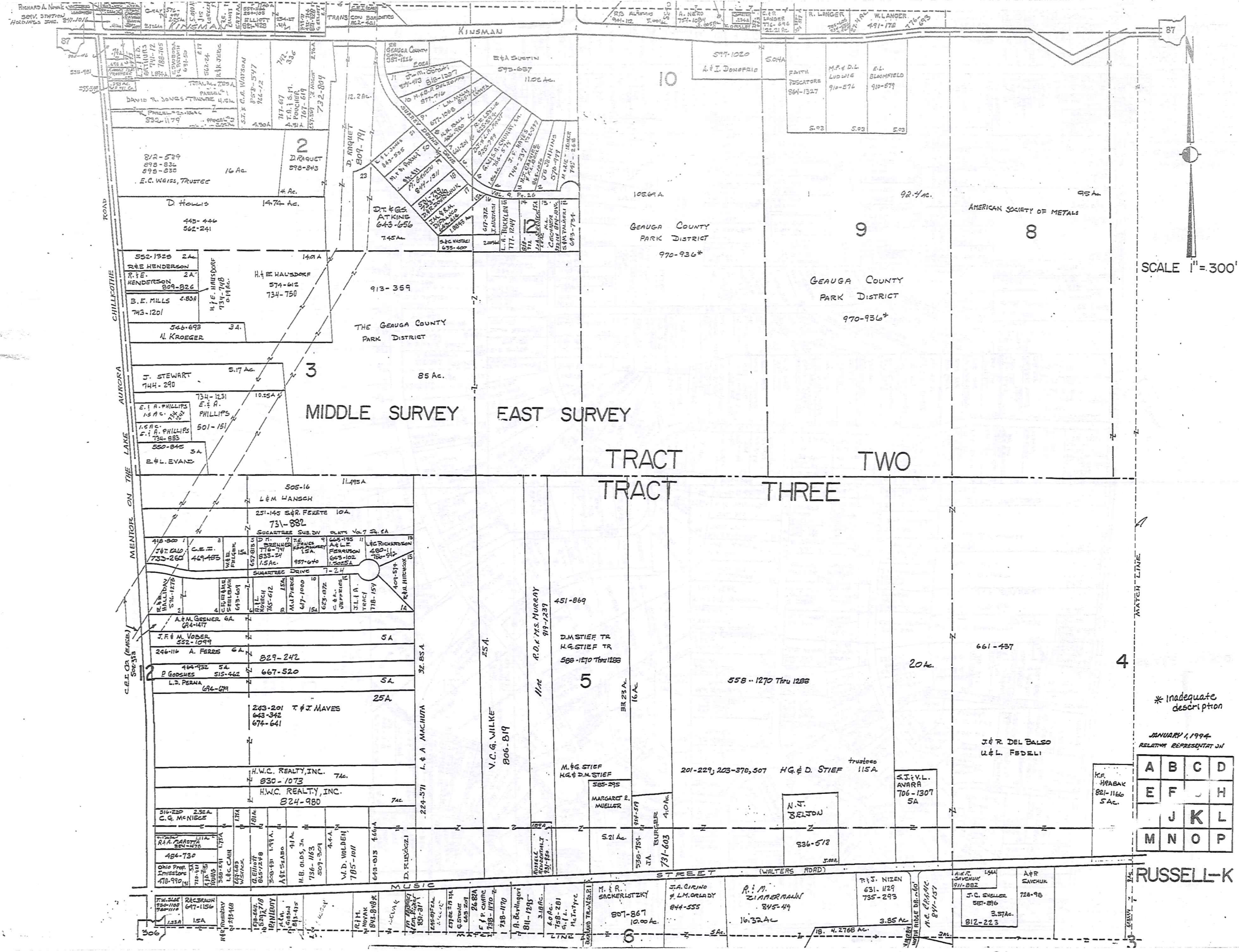
TRW-REDI  
 SCALE IN 1/10 OF AN INCH  
 1-800-345-7334

\* Inadequate description

JANUARY 4, 1994  
 RELATIVE REPRESENTATION

A	B	C	D
E	F	G	H
I	J	K	L
M	N	O	P

RUSSELL-J.



SCALE 1" = 300'

TRW-REDI SCALE IN 1/10 OF AN INCH

1-800-345-7334

\* Inadequate description

JANUARY 1, 1994 RELATIVE REPRESENTATION

A	B	C	D
E	F	G	H
J	K	L	
M	N	O	P

RUSSELL-K

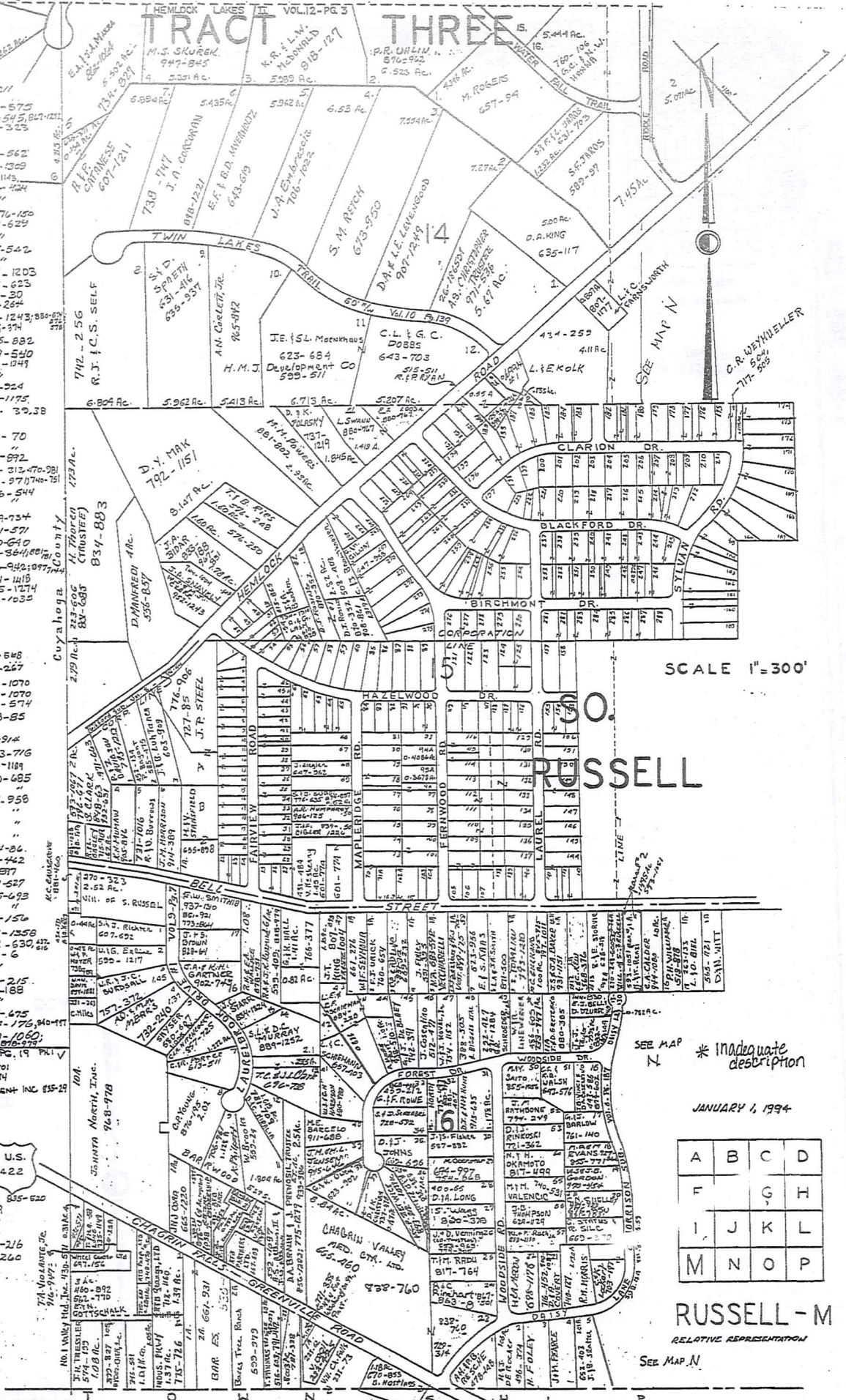


CHAGRIN HEIGHTS SUBDIVISION VOL. 3 - PG. 5-6 & 17-18 PLATS

Table listing property owners and addresses for Chagrin Heights Subdivision, including names like S.L. Wiberg, E. Van Krich, and various lot numbers.

CHAGRIN FALLS

Table listing property owners and addresses for Chagrin Falls, including names like J.H. Foster, S.S. Schmidt & R. Schmidt, and various lot numbers.



TRW-REDI SCALE IN 1/10 OF AN INCH

SCALE 1"=300'

\* Inadequate description

JANUARY 1, 1994

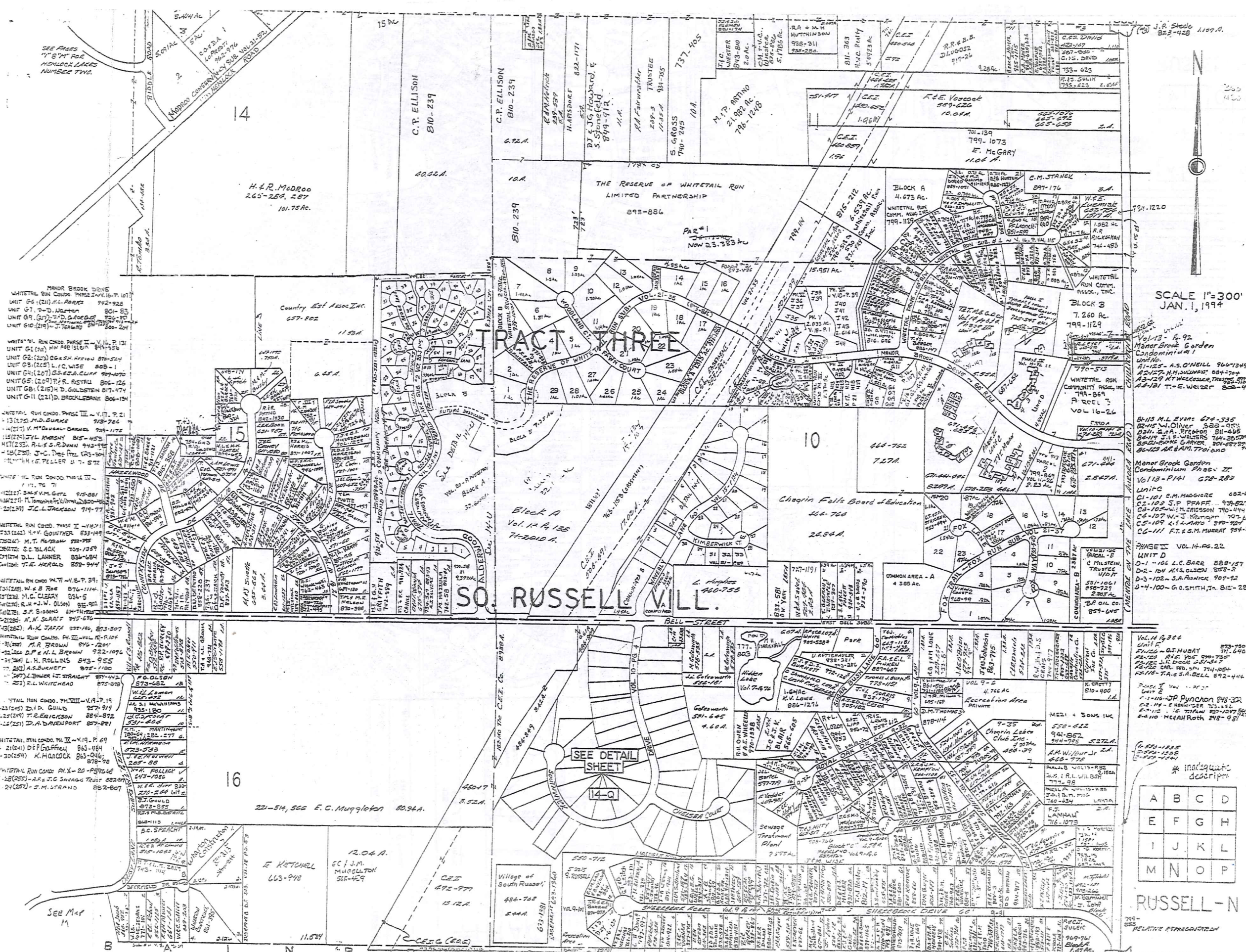
Grid reference table with letters A through P in a 4x4 arrangement.

RUSSELL-M RELATIVE REPRESENTATION

SEE MAP N

1-800-345-7334

Small text at the bottom left corner providing additional details or disclaimers.



SEE PAGES 11 & 12 FOR HATCHBACK LINES NUMBER TWO.

MANOR BROOK DRIVE  
WHITETAIL RUN CONDO PHASE I VOL. 16-17  
UNIT 66 (21) M.L. PARKS 792-926  
UNIT 67 T.D. NORTON 801-85  
UNIT 68 (27) T.D. GARDNER 725-75  
UNIT 69 (21) J. TERRY 800-204

WHITETAIL RUN CONDO PHASE II VOL. 18  
UNIT G1 (12) M. R. BLOOM 845-556  
UNIT G2 (25) C. S. HARRIS 879-524  
UNIT G3 (25) L. C. WISE 808-1  
UNIT G4 (20) G. S. A. CURR 999-070  
UNIT G5 (20) P. R. ASTRA 805-126  
UNIT G6 (25) H. D. GOLDSTEIN 817-177  
UNIT G7 (21) D. BROOKBANK 806-154

WHITETAIL RUN CONDO PHASE III VOL. 19  
UNIT 13 (25) M. D. BURKE 795-786  
UNIT 14 (21) V. M. DEVALAN 799-1175  
UNIT 15 (25) J. L. MURPHY 815-453  
UNIT 16 (25) R. L. S. RIVINS 943-956  
UNIT 17 (25) J. C. DEE 743-300  
UNIT 18 (25) H. C. PELLER 817-572

WHITETAIL RUN CONDO PHASE IV VOL. 20  
UNIT 19 (25) M. T. MORGAN 828-785  
UNIT 20 (25) S. C. BLACK 805-129  
UNIT 21 (25) D. L. LAUNER 836-684  
UNIT 22 (25) T. E. HERROLD 809-944

WHITETAIL RUN CONDO PHASE V VOL. 21  
UNIT 23 (25) W. B. ROE 876-1114  
UNIT 24 (25) H. C. CLARY 834-5  
UNIT 25 (25) R. W. J. OLSON 895-92  
UNIT 26 (25) S. F. SIMONS 847-1112  
UNIT 27 (25) N. N. SLAFT 945-676  
UNIT 28 (25) A. K. JAFFA 881-146  
UNIT 29 (25) A. R. BROWN 876-201  
UNIT 30 (25) D. P. A. L. BROWN 722-1094  
UNIT 31 (25) L. H. ROLLINS 843-955  
UNIT 32 (25) A. S. BURKETT 875-1100  
UNIT 33 (25) L. BOWEN 871-442  
UNIT 34 (25) R. L. WHITEHEAD 875-878

WHITETAIL RUN CONDO PHASE VI VOL. 22  
UNIT 35 (25) D. D. GUILD 857-914  
UNIT 36 (25) T. R. ERICKSON 884-872  
UNIT 37 (25) D. A. DANFORTH 857-881

WHITETAIL RUN CONDO PHASE VII VOL. 23  
UNIT 38 (25) D. P. GARNER 863-184  
UNIT 39 (25) K. HANCOCK 863-046  
UNIT 40 (25) 878-78

WHITETAIL RUN CONDO PHASE VIII VOL. 24  
UNIT 41 (25) A. F. J. C. SAVAGE TRUST 882-87  
UNIT 42 (25) J. M. STRAND 882-807

See Map M

SCALE 1"=300'  
JAN. 1, 1994

MANOR BROOK GARDEN  
CONDOMINIUM I  
UNIT 10  
A1-125 A.S. O'NEILL 966-1349  
A2-125 M.H. JOURNALIST 884-704  
A3-125 K.F. WICKELER 764-3550  
A4-125 T.E. WEIZEL 808-494

MANOR BROOK GARDEN  
CONDOMINIUM II  
VOL. 13-P141 678-283  
UNIT C  
C1-101 S.M. MAGUIRE 682-628  
C2-102 S.P. PFAFF 939-827  
C3-103 M. CRISSON 790-444  
C4-104 W.J. KEMPER 707-61  
C5-105 L.J. ANTO 370-721  
C6-111 R.T. S.M. MURRAY 794-36

PHASE II VOL. 14-PC. 22  
UNIT D  
D1-106 L.C. BARR 888-157  
D2-107 M. S. OLSON 808-3  
D3-108 J.A. FENNER 907-92  
D4-109 G.O. SMITH, JR. 815-288

VOL. 14-326  
UNIT E  
E1-106 G.T. HUBAY 879-640  
E2-107 R.S. YOE 890-755  
E3-108 M. S. OLSON 808-3  
E4-109 CAR. FED. 701-1054  
E5-110 T.A. S. A. BELL 892-444

UNIT F  
F1-116 J.P. PUNCHON 848-308  
F2-117 E. HENNINGER 755-152  
F3-118 G. TRIFIAN 801-1077  
F4-119 M. C. ROTH 248-981

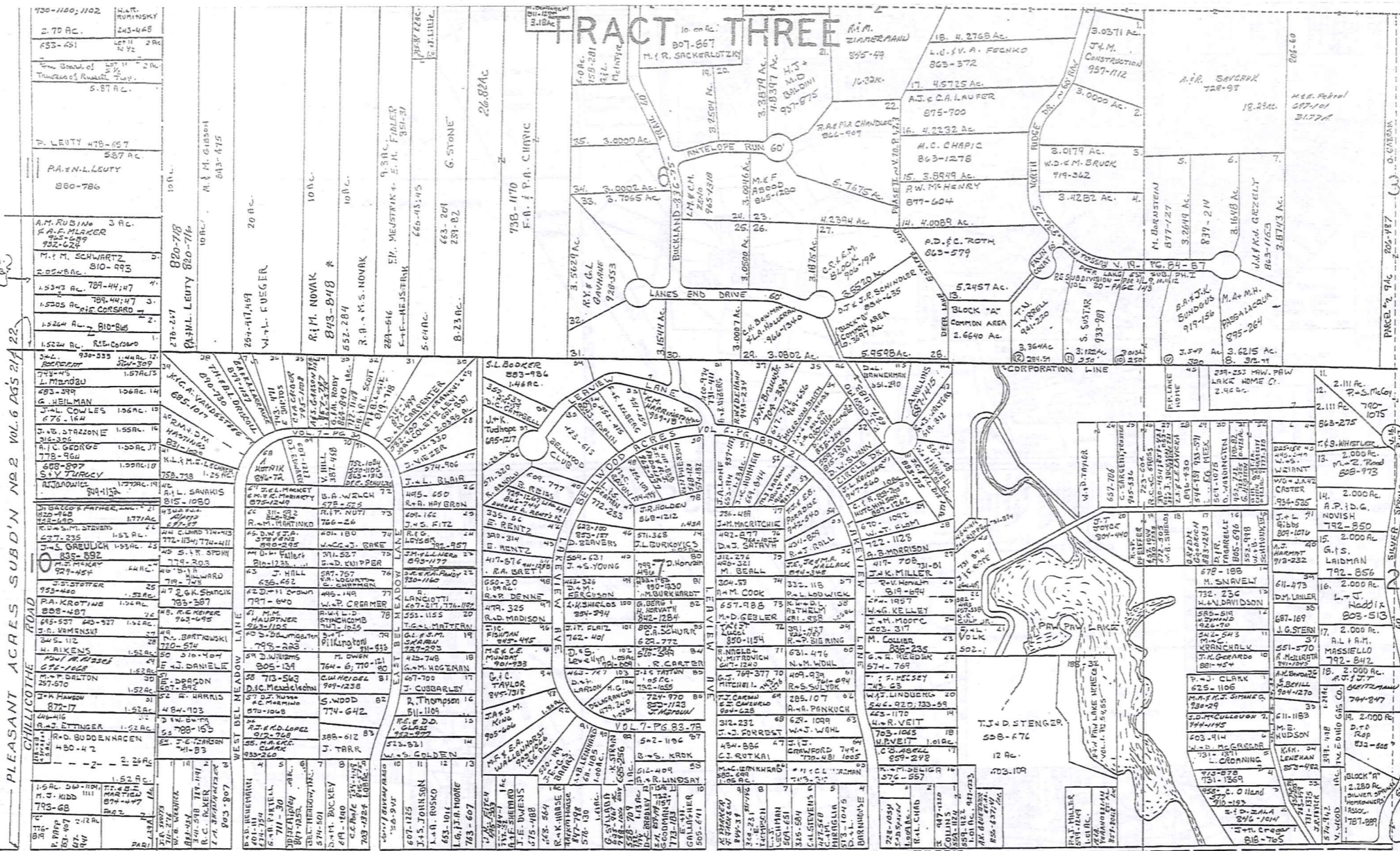
\* INADEQUATE  
DESCRIPTION

A	B	C	D
E	F	G	H
I	J	K	L
M	N	O	P

RUSSELL-N  
RELATIVE REPRESENTATION

TRW-REDI SCALE IN 1/10 OF AN INCH 1-800-345-7334

# TRACT THREE



M.E. J. FRANK VOL. 304 Pgs. 239-241  
"Lake Louise" Subdiv. Vol. 1, pg. 64

1	589	871	REV. MATERNI
2	754	707	G.M. YAGGER
3	752	422	REC. GENBERG
4	707	127	DEL. ROMAN
5	477	447	G.C. GOODRICH
6	477	172	G.A. BAMBERGER
7	477	578	M.A. MILLER
8	501	750	P.H. MILLER
9	845	294	H. GANES 889-1519
10	478	477	S.A. SADDLER 677-949
11	702	1271	S.A. SADDLER
12	537	168	G. MARSHALL 810-641
13	784	1103	H.D. BARNHART
14	815	471	K.J. FOBLE

SCALE 1"=300'  
JAN. 1, 1994

11	851	443	T.F. CL. MAURER
12	578	926	A.K. MALMOIST
13	714	727	F.R. MARRNEY FAMILY TRUST
14	554	586	M.H. RIEGEL
15	804	763	R.W. M.D. SCHOENFELD
16	480	112	REN. RUDOLPH
17	542	163	RED. LANSON
18	580	1212	H.C. WEATHERHEAD
19	542	926	LAKE LOUISE SUB
20	542	926	S.P. K. HOLMES
21	542	926	S.P. K. HOLMES
22	542	926	S.P. K. HOLMES
23	542	926	S.P. K. HOLMES
24	542	926	S.P. K. HOLMES
25	542	926	S.P. K. HOLMES
26	542	926	S.P. K. HOLMES
27	542	926	S.P. K. HOLMES
28	542	926	S.P. K. HOLMES
29	542	926	S.P. K. HOLMES
30	542	926	S.P. K. HOLMES
31	542	926	S.P. K. HOLMES
32	542	926	S.P. K. HOLMES
33	542	926	S.P. K. HOLMES
34	542	926	S.P. K. HOLMES
35	542	926	S.P. K. HOLMES
36	542	926	S.P. K. HOLMES
37	542	926	S.P. K. HOLMES
38	542	926	S.P. K. HOLMES
39	542	926	S.P. K. HOLMES
40	542	926	S.P. K. HOLMES
41	542	926	S.P. K. HOLMES
42	542	926	S.P. K. HOLMES
43	542	926	S.P. K. HOLMES
44	542	926	S.P. K. HOLMES
45	542	926	S.P. K. HOLMES
46	542	926	S.P. K. HOLMES
47	542	926	S.P. K. HOLMES
48	542	926	S.P. K. HOLMES
49	542	926	S.P. K. HOLMES
50	542	926	S.P. K. HOLMES
51	542	926	S.P. K. HOLMES
52	542	926	S.P. K. HOLMES
53	542	926	S.P. K. HOLMES
54	542	926	S.P. K. HOLMES
55	542	926	S.P. K. HOLMES
56	542	926	S.P. K. HOLMES
57	542	926	S.P. K. HOLMES
58	542	926	S.P. K. HOLMES
59	542	926	S.P. K. HOLMES
60	542	926	S.P. K. HOLMES
61	542	926	S.P. K. HOLMES
62	542	926	S.P. K. HOLMES
63	542	926	S.P. K. HOLMES
64	542	926	S.P. K. HOLMES
65	542	926	S.P. K. HOLMES
66	542	926	S.P. K. HOLMES
67	542	926	S.P. K. HOLMES
68	542	926	S.P. K. HOLMES
69	542	926	S.P. K. HOLMES
70	542	926	S.P. K. HOLMES
71	542	926	S.P. K. HOLMES
72	542	926	S.P. K. HOLMES
73	542	926	S.P. K. HOLMES
74	542	926	S.P. K. HOLMES
75	542	926	S.P. K. HOLMES
76	542	926	S.P. K. HOLMES
77	542	926	S.P. K. HOLMES
78	542	926	S.P. K. HOLMES
79	542	926	S.P. K. HOLMES
80	542	926	S.P. K. HOLMES
81	542	926	S.P. K. HOLMES
82	542	926	S.P. K. HOLMES
83	542	926	S.P. K. HOLMES
84	542	926	S.P. K. HOLMES
85	542	926	S.P. K. HOLMES
86	542	926	S.P. K. HOLMES
87	542	926	S.P. K. HOLMES
88	542	926	S.P. K. HOLMES
89	542	926	S.P. K. HOLMES
90	542	926	S.P. K. HOLMES
91	542	926	S.P. K. HOLMES
92	542	926	S.P. K. HOLMES
93	542	926	S.P. K. HOLMES
94	542	926	S.P. K. HOLMES
95	542	926	S.P. K. HOLMES
96	542	926	S.P. K. HOLMES
97	542	926	S.P. K. HOLMES
98	542	926	S.P. K. HOLMES
99	542	926	S.P. K. HOLMES
100	542	926	S.P. K. HOLMES

A	B	C	D
E	F	G	H
I	J	K	L
M	N	O	P

RUSSELL-0

RELATIVE REPRESENTATION

TRW-REDI  
SCALE IN 1/10 OF AN INCH

1-800-345-7334

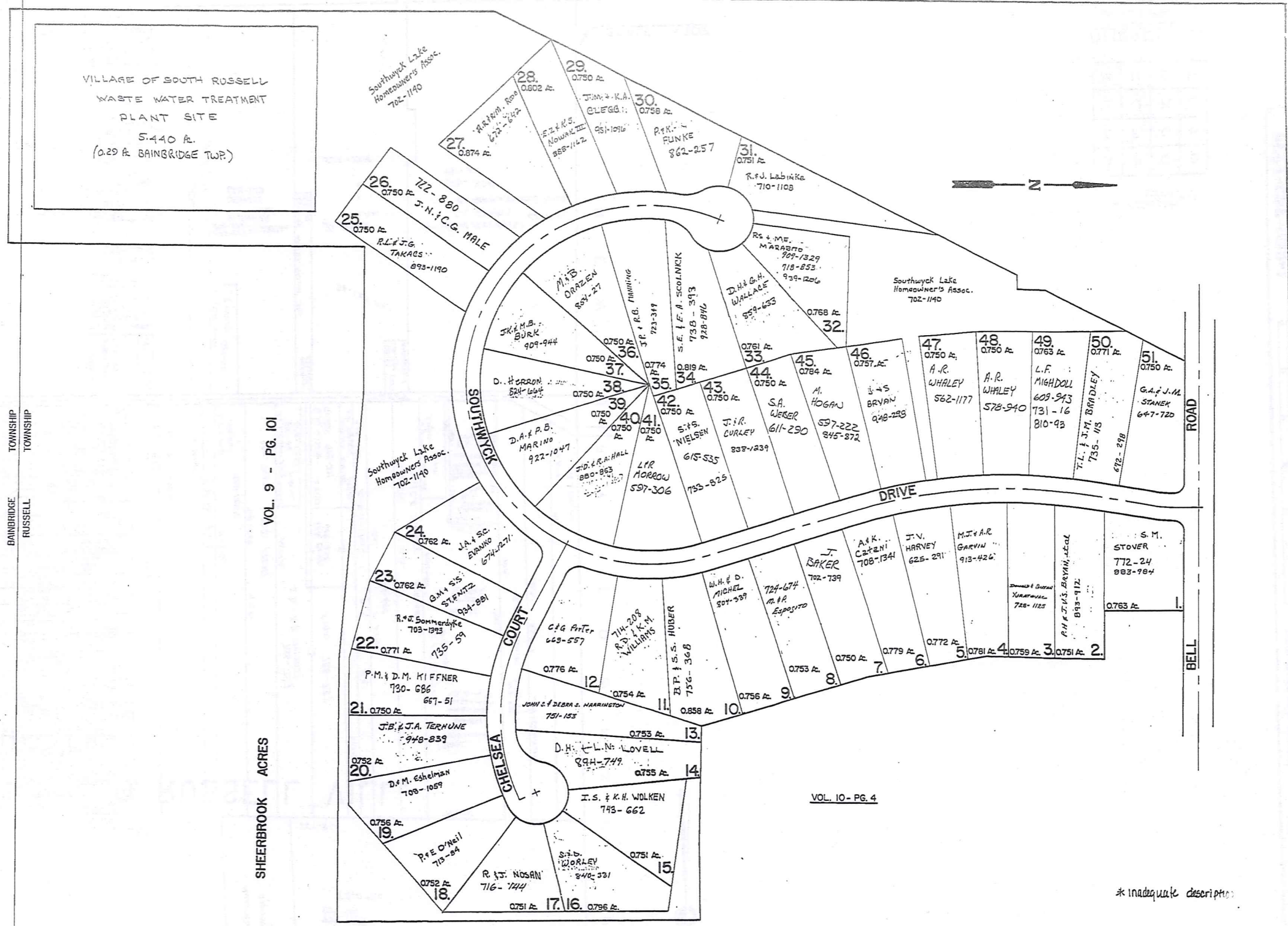
FLORENCE A. HAYES 805-112 P.19

PLEASANT ACRES SUBD'N NO. 2 VOL. 6 Pgs. 21-22  
CHILICOTHE ROAD

BELL ROAD 744-277  
112-23 MILL CREEK RUSSELL

\*Inadequate description





BAINBRIDGE TOWNSHIP  
RUSSELL TOWNSHIP

VILLAGE OF SOUTH RUSSELL  
WASTE WATER TREATMENT  
PLANT SITE  
5.440 A.  
(0.29 A. BAINBRIDGE TWP.)

VOL. 9 - PG. 101

SHEERBROOK ACRES

VOL. 10 - PG. 4

TRW-REDI  
SCALE IN 1/10 OF AN INCH



1-800-345-7334

\* Inadequate description

# SHEERBROOK ACRES NUMBER 2

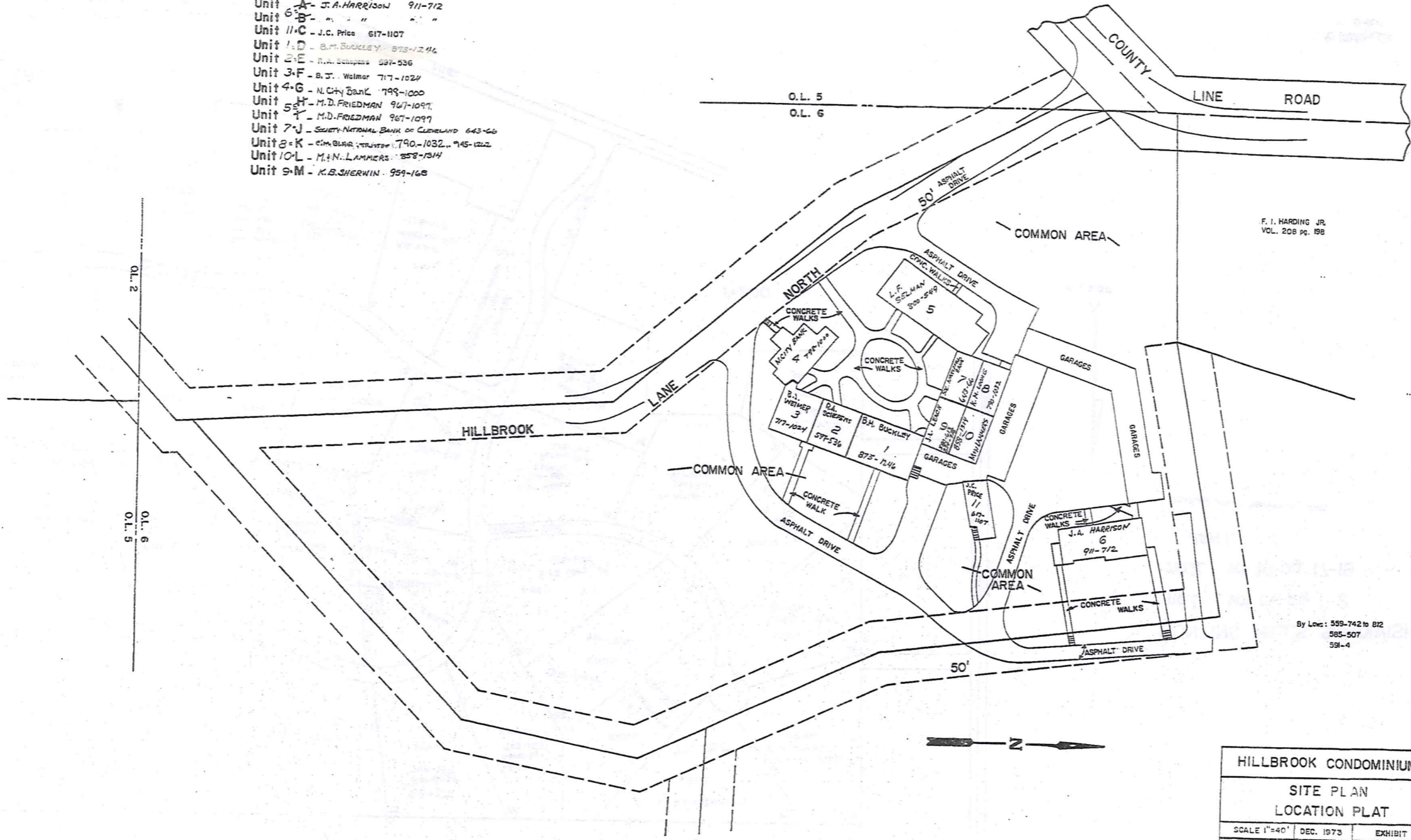
JAN. 1, 1992

RELATIVE REPRESENTATION

14-Q

AMENDED  
HILLBROOK CONDOMINIUM

- VOL 20 - P119  
 Unit A - J.A. HARRISON 911-712  
 Unit B - " " " "  
 Unit C - J.C. PRICE 617-1107  
 Unit D - B.M. BUCKLEY 873-1246  
 Unit E - R.M. SCHREIBER 597-536  
 Unit F - B.J. WELMER 717-1024  
 Unit G - N. CHY BANK 799-1000  
 Unit H - M.D. FRIEDMAN 967-1097  
 Unit I - M.D. FRIEDMAN 967-1097  
 Unit J - SOCIETY NATIONAL BANK OF CLEVELAND 643-66  
 Unit K - SIM BLAIR, TRUSTEE 790-1032, 945-1222  
 Unit L - M.N. LAMMERS 858-1314  
 Unit M - K.B. SHERWIN 959-168



F. I. HARDING JR.  
VOL. 208 PG. 188

By Laws: 599-742 to 812  
585-507  
591-4

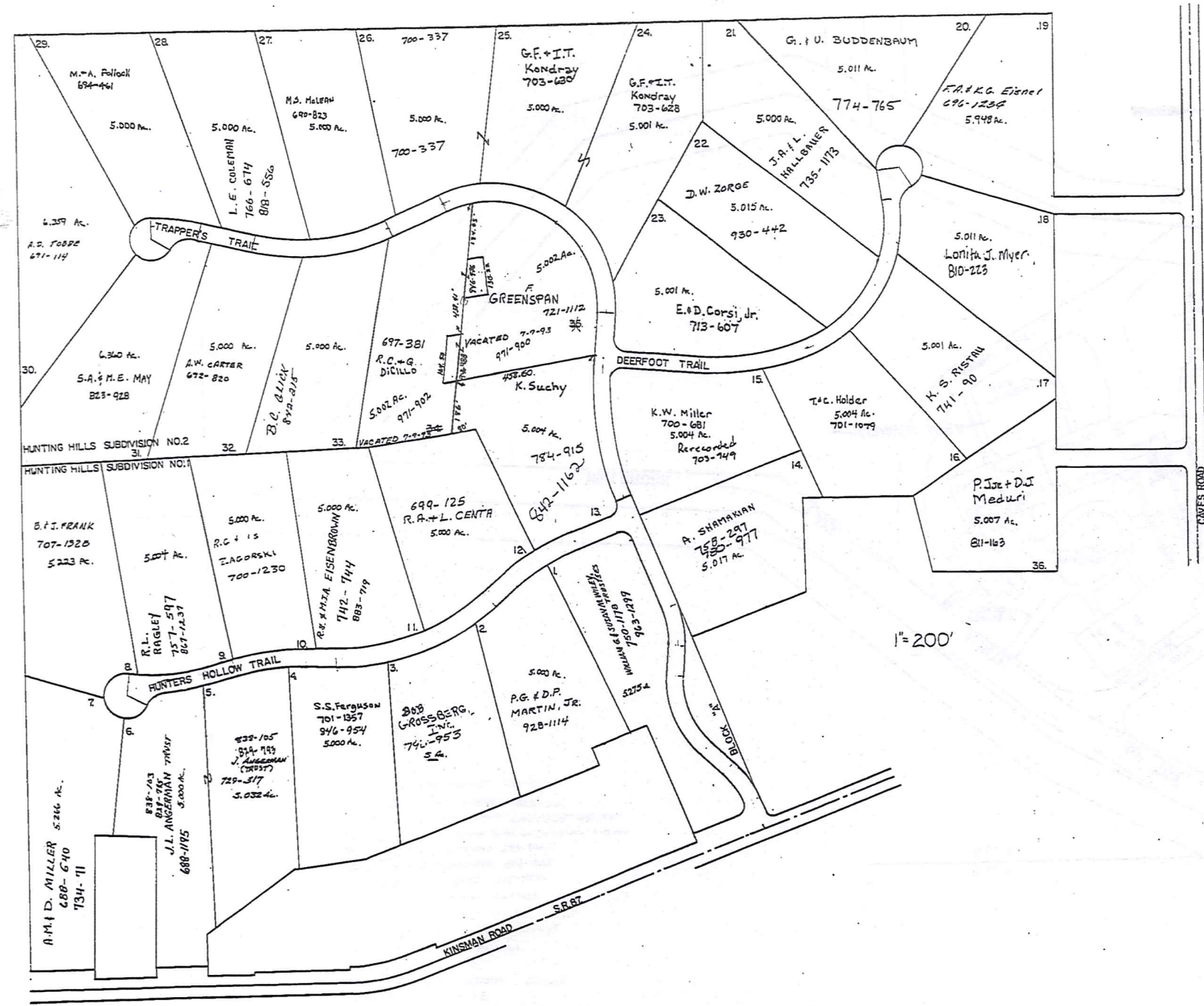
HILLBROOK CONDOMINIUM  
 SITE PLAN  
 LOCATION PLAT  
 SCALE 1"=40' DEC. 1973 EXHIBIT B  
 14 - R RUSSELL

Recorded Vol. 10 pg. 39  
 AMENDED VOL 20 - P119 8-11-92

JAN. 1, 1992

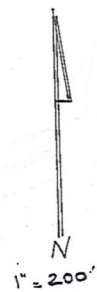
RELATIVE REPRESENTATION  
 \* Inadequate description

TRW-REDI  
 SCALE IN 1/10 OF AN INCH  
 1-800-345-7334



HUNTING HILLS SUBDIVISIONS. 1&2.  
 no.1 vol. 14 pg. 1-2.  
 no.2 vol. 14 pg. 17-19.  
 JAN 1,

HUNTING HILLS PROPERTIES, INC.



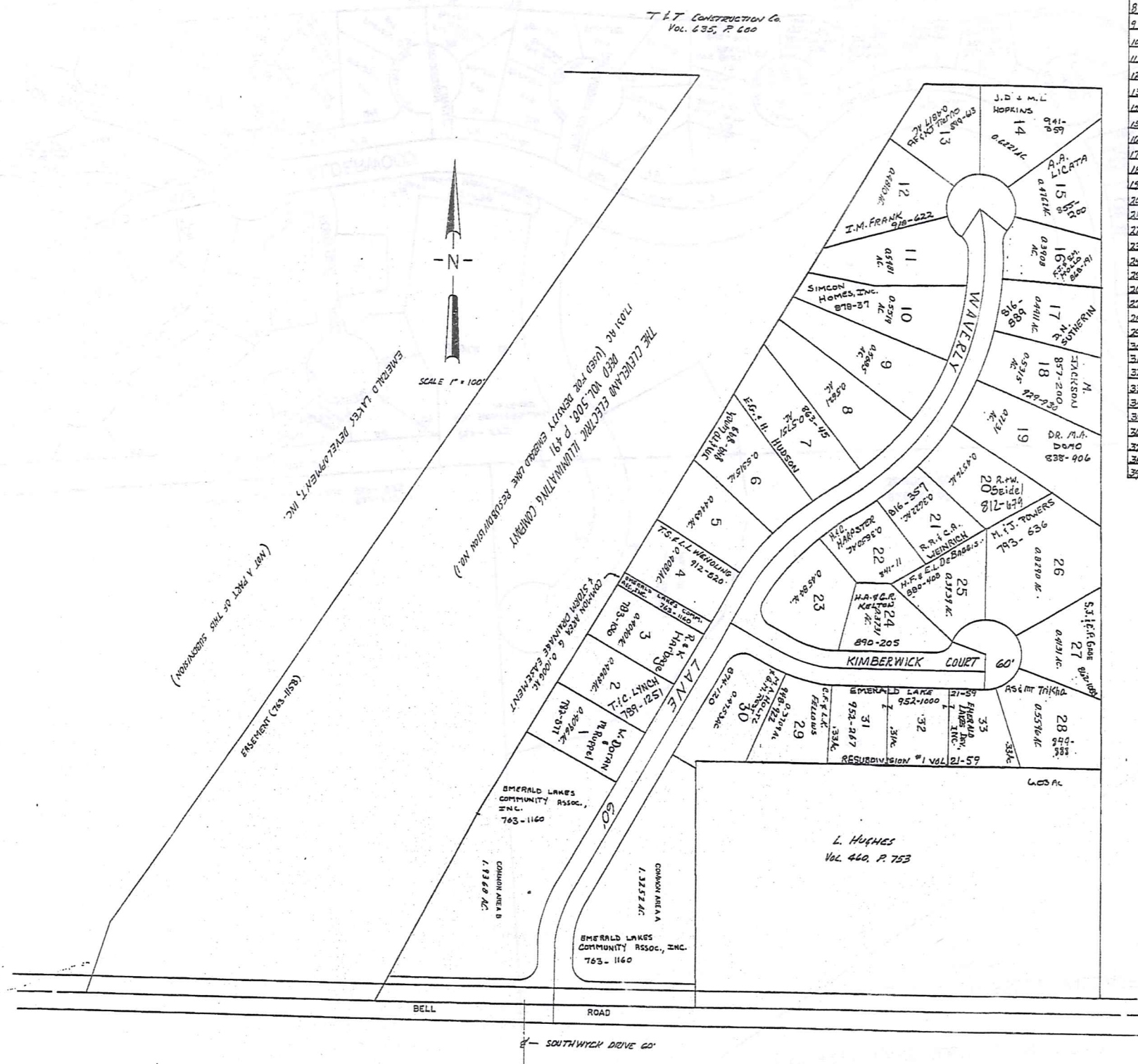
1" = 200'

1" = 200'

\* Inadequate description

JANUARY 1, 1994  
 RELATIVE REPRESENTATION

TRU-RED SCALE IN 1/10 OF AN INCH 1-800-345-7334



EMERALD LAKE SUB #2 VOL. 20 PG 145

No.	Vol.	Page	Date	No.	Vol.	Page	Date
1				41			
2				42			
3				43			
4				44			
5				45			
6				46			
7				47			
8				48			
9				49			
10				50			
11				51			
12				52			
13				53			
14				54			
15				55			
16				56			
17				57			
18				58			
19				59			
20				60			
21				61			
22							
23							
24							
25							
26							
27							
28							
29							
30							
31							
32							
33							
34							
35							
36							
37							
38							
39							
40							

EMERALD LAKE  
SUBDIVISION NO. 1  
VOL. 15 - PG. 107, 108 &  
RESUBDIVISION NO. 1  
VOL. 15 - PG. 134, 135

1" = 100'

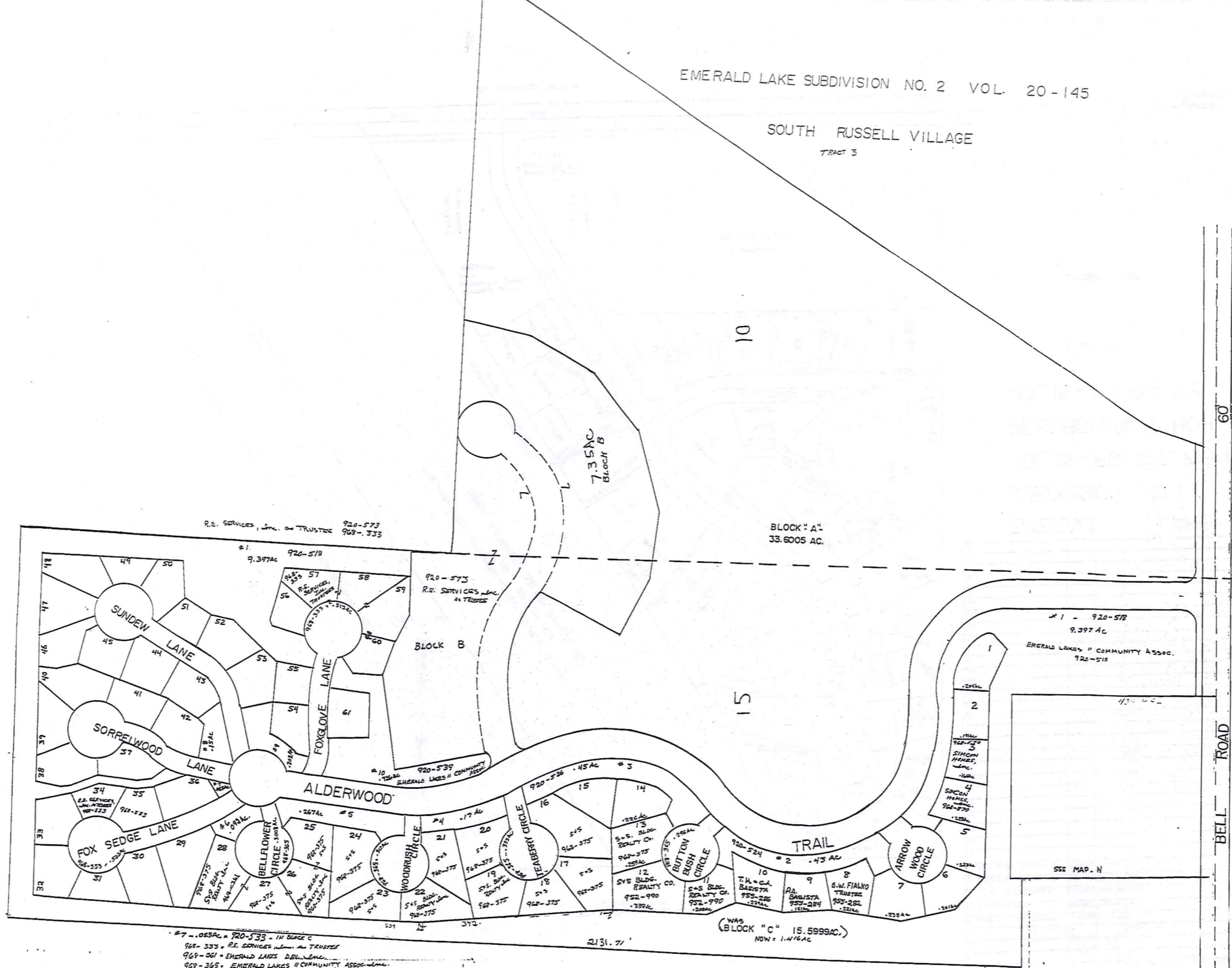
JANUARY 1, 1994

\* inadequate description

TRW-REDI  
SCALE IN 1/10 OF AN INCH  
1-800-345-7334

EMERALD LAKE SUBDIVISION NO. 2 VOL. 20-145

SOUTH RUSSELL VILLAGE  
TRACT 3



\*7 - ORSAL = 920-535 - 14' BURE C  
 968-333 = R.E. SERVICES, INC. & TRUSTEE  
 969-361 = EMERALD LAKES II COMMUNITY ASSOC.  
 969-365 = EMERALD LAKES II COMMUNITY ASSOC.

(WAS "BLOCK C" 15.5999 AC.)  
 NOW = 1.416 AC

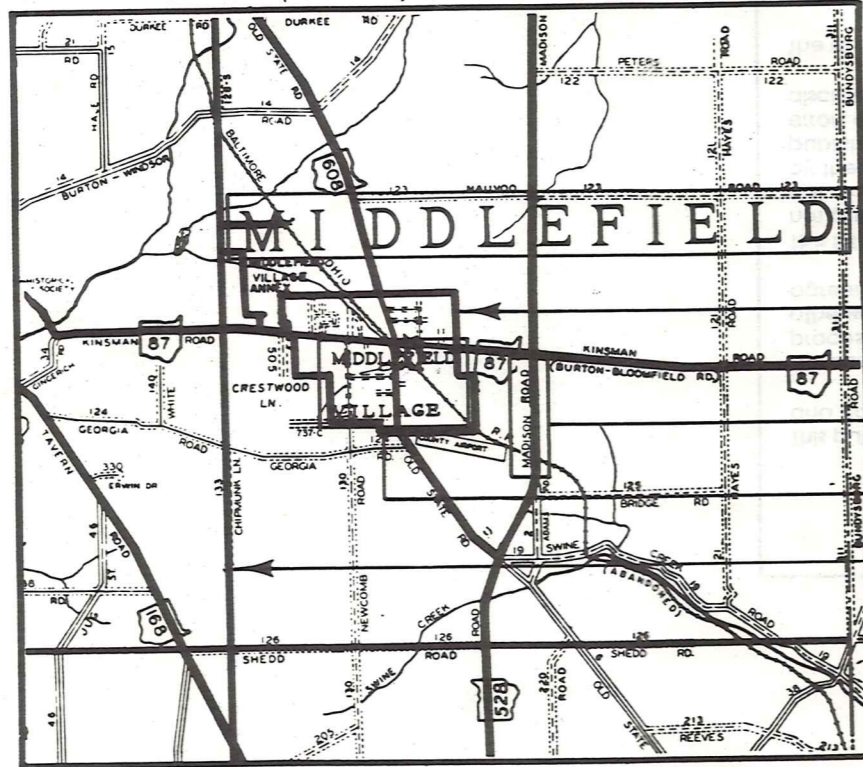
SCALE: 1" = 100'  
 JANUARY 1, 1994  
 RELATIVE REPRESENTATION  
 SUBDIVISION PLAT VOL. 20-145

TRW-REDI  
 SCALE IN 1/10 OF AN INCH  
 1-800-345-7334

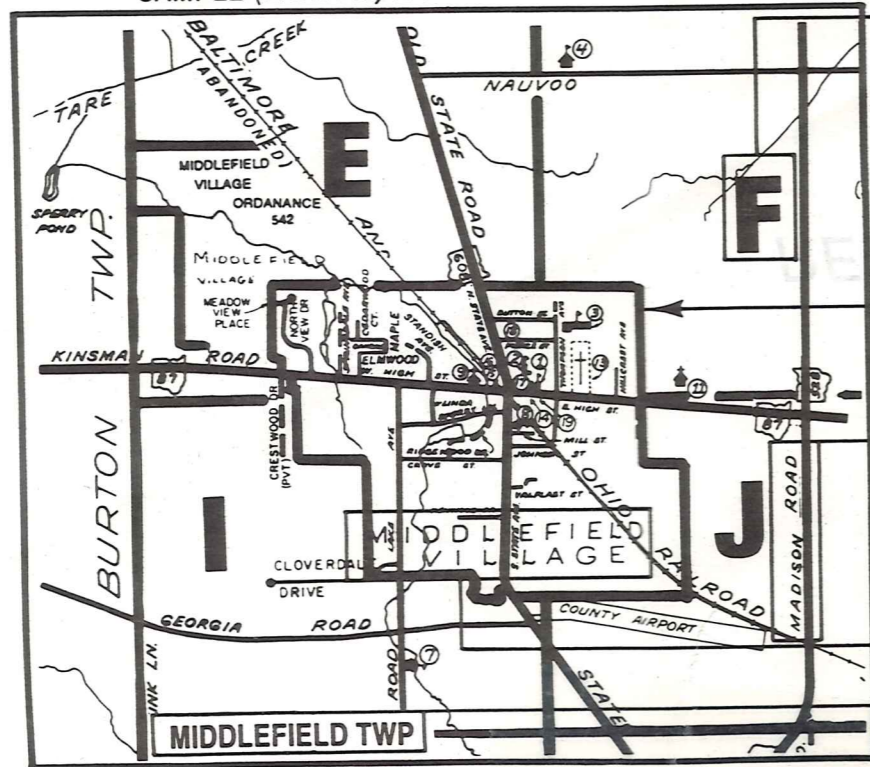
# Explanation and Use Sheet for Geauga County, Ohio

A

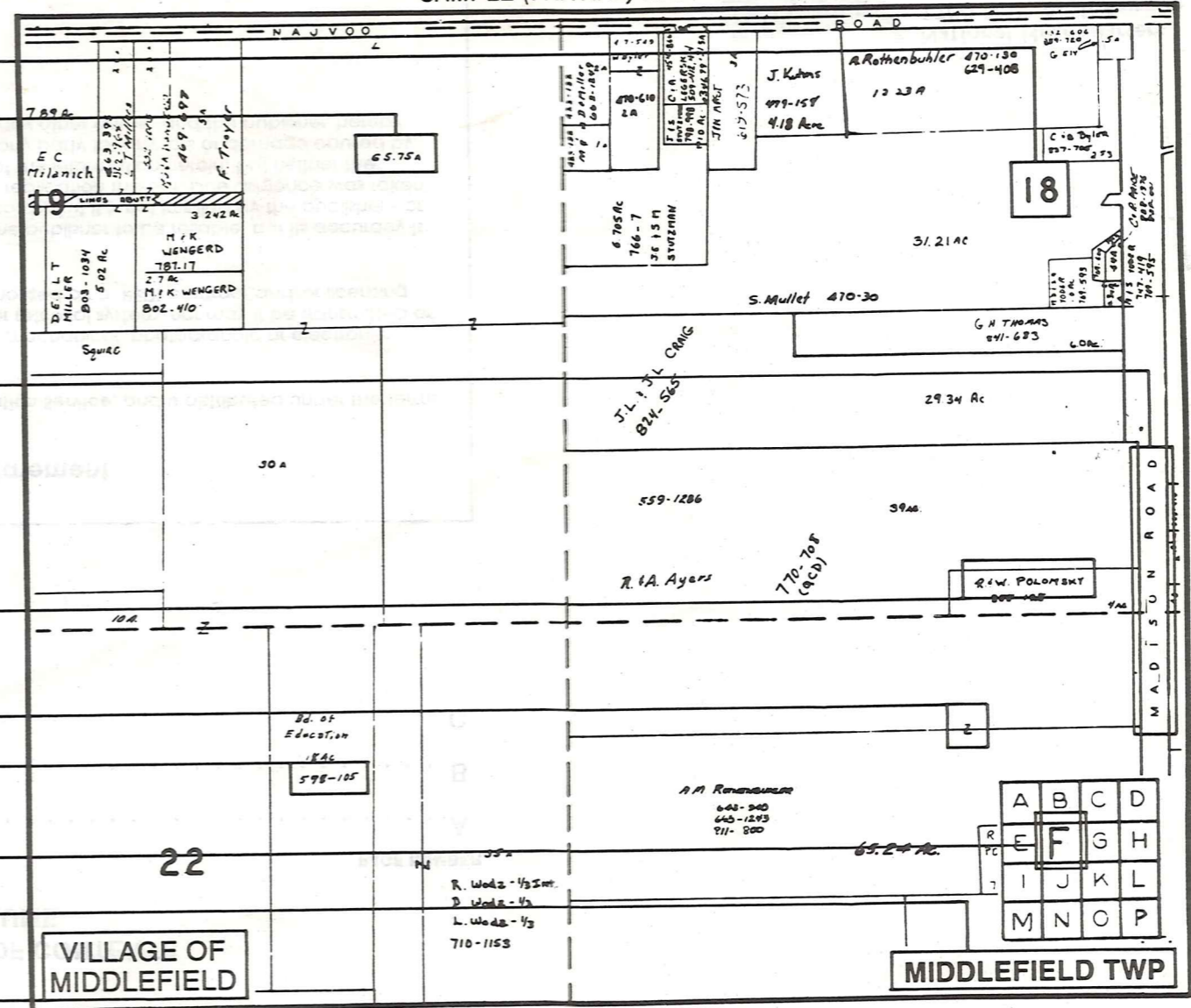
SAMPLE (PARTIAL) COUNTY INDEX MAP



SAMPLE (PARTIAL) MUNICIPALITY INDEX MAP



SAMPLE (PARTIAL) MAP PAGE



- Tract Lot Number
- Acreage
- Township Name
- Village Boundary
- Street Name
- Village Name
- Township Boundary
- Owners Name
- Denotes Continuous Ownership
- Deed Book & Page
- Map Page Number
- Township Name
- Village Name

- Village Boundary
- Street Name
- Village Name
- Township Name

## USE OF THE MAP VOLUME

1. LOCATE THE GENERAL AREA OF INTEREST ON THE COUNTY INDEX MAP AND NOTE THE MUNICIPALITY NAME (TOWNSHIP OR VILLAGE).
  2. REFER TO THE TABLE OF CONTENTS AND NOTE THE BEGINNING ATLAS PAGE NUMBER FOR THE MUNICIPALITY OF INTEREST.
  3. TURN TO THE PAGE INDICATED, ON THIS PAGE WILL APPEAR AN INDEX MAP FOR THAT MUNICIPALITY.
  4. LOCATE THE GENERAL AREA OF INTEREST AND NOTE THE MAP PAGE NUMBER. THIS MAY BE EITHER A LETTER OR A NUMBER.
  5. MAP PAGES ARE IN ALPHABETICAL (OR NUMERICAL) SEQUENCE FOLLOWING THE MUNICIPALITY INDEX MAP. FOLLOW SEQUENCE TO THE MAP PAGE INDICATED.
  6. LOCATE SPECIFIC PARCEL OF INTEREST AND NOTE THE DESIRED INFORMATION.
- NOTE: ON SOME MAPS YOU MAY BE REFERRED TO A DETAIL SHEET SHOWING AN ENLARGEMENT OF THE AREA. THESE MAPS ARE FOUND AT THE END OF THE REGULAR MAP PAGES IN EACH MUNICIPALITY IN EITHER ALPHABETICAL OR NUMERICAL SEQUENCE.
- NOTE: CHARDON VILLAGE HAS TITLE SHEETS. TO LOCATE OWNERS NAME, NOTE THE PARCEL NUMBER, REFER TO THE TITLE PAGE FOLLOWING THE MAP OF INTEREST, FOLLOW NUMERICAL SEQUENCE TO THE PARCEL NUMBER OF INTEREST AND NOTE THE DESIRED INFORMATION. IN ALL OTHER MUNICIPALITIES THE OWNERS NAME APPEARS ON THE MAP PAGE.